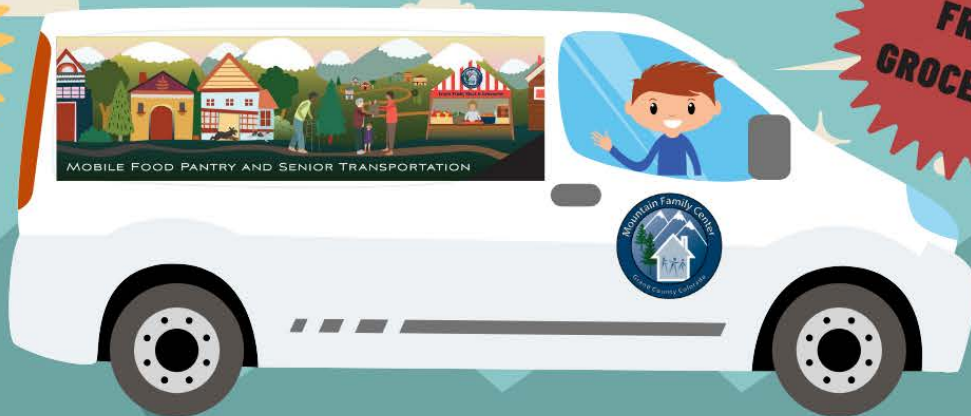


MOUNTAIN FAMILY CENTER'S  
**MOBILE FOOD PANTRY**

RUNNING EVERY WEDNESDAY

**MAY-SEPT 2024**

**BRING YOUR  
REUSABLE  
BAGS!**



**FREE  
FRESH  
GROCERIES!**

## **DATES, LOCATIONS, & TIMES\***

### **FIRST WEDNESDAY OF THE MONTH!**

#### **FRASER**

10:30am-11:30am: Fox Run Apartments  
12:15pm-1:15pm: Wapiti Meadows

### **SECOND WEDNESDAY OF THE MONTH!**

#### **KREMMLING/HOT SULPHUR**

10:30am-11:30am: Silver Spruce  
12:15pm-1:15pm: MFC Kremmling Food  
Pantry  
2:00pm-2:30pm: HSS Post Office

### **THIRD WEDNESDAY OF THE MONTH!**

#### **GRANBY/GRAND LAKE**

10:30am-11:30am: Inn at Silvercreek  
->Far West entrance (1st entrance) by bus stop  
12:15pm-1:15pm: Granby Senior Housing  
2:00pm-3:00pm: Grand Lake Center

### **FOURTH WEDNESDAY OF THE MONTH!**

#### **WALDEN**

11:30am-12:30pm: Walden Food  
Pantry

\*Dates, locations, and times are subject to change and are weather permitting. If the weather is bad, you can pick up on Wednesdays at the Food Pantry in Granby or Thursdays at the Food Pantry in Kremmling.

For more information call **Aspen** at **970-557-3186**, email **aspen@mountainfamilycenter.org** or visit **www.mountainfamilycenter.org**