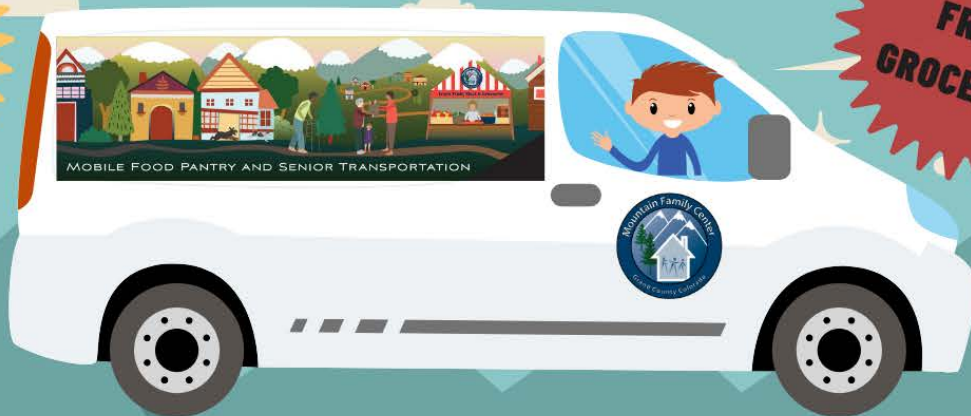


MOUNTAIN FAMILY CENTER'S
MOBILE FOOD PANTRY

RUNNING EVERY WEDNESDAY

MAY-SEPT 2024

**BRING YOUR
REUSABLE
BAGS!**



**FREE
FRESH
GROCERIES!**

DATES, LOCATIONS, & TIMES*

FIRST WEDNESDAY OF THE MONTH!

FRASER

10:30am-11:30am: Fox Run Apartments
12:15pm-1:15pm: Wapiti Meadows

SECOND WEDNESDAY OF THE MONTH!

KREMMLING/HOT SULPHUR

10:30am-11:30am: Silver Spruce
12:15pm-1:15pm: MFC Kremmling Food
Pantry
2:00pm-2:30pm: HSS Post Office

THIRD WEDNESDAY OF THE MONTH!

GRANBY/GRAND LAKE

10:30am-11:30am: Inn at Silvercreek
->Far West entrance (1st entrance) by bus stop
12:15pm-1:15pm: Granby Senior Housing
2:00pm-3:00pm: Grand Lake Center

FOURTH WEDNESDAY OF THE MONTH!

WALDEN

11:30am-12:30pm: Walden Food
Pantry

*Dates, locations, and times are subject to change and are weather permitting. If the weather is bad, you can pick up on Wednesdays at the Food Pantry in Granby or Thursdays at the Food Pantry in Kremmling.

For more information call **Aspen** at **970-557-3186**, email **aspen@mountainfamilycenter.org** or visit **www.mountainfamilycenter.org**

MOUNTAIN FAMILY CENTER'S

DESPENSA MOVIL

TODOS LOS MIÉRCOLES

MAYO-SEPT 2024

**¡TRAJE TUS
BOLSAS
REUTILIZABLES!**



**¡COMIDA
FRESCA Y
GRATIS!**

FECHAS, LUGARES Y HORARIOS*

¡EL PRIMER MIÉRCOLES DEL MES!

FRASER

10:30am-11:30am: Fox Run Apartments
12:15pm-1:15pm: Wapiti Meadows

¡EL SEGUNDO MIÉRCOLES DEL MES!

KREMMLING/HOT SULPHUR

10:30am-11:30am: Silver Spruce
12:15pm-1:15pm: MFC Kremmling Food
Pantry
2:00pm-2:30pm: HSS Oficina Postal

¡EL TERCER MIÉRCOLES DEL MES!

GRANBY/GRAND LAKE

10:30am-11:30am: Inn at Silvercreek
->Entrada del Oeste, sigue el letrero
12:15pm-1:15pm: Granby Senior Housing
2:00pm-3:00pm: Grand Lake Center

¡EL CUARTO MIÉRCOLES DEL MES!

WALDEN

11:30am-12:30pm: Walden Food
Pantry

*Las fechas, lugares y horarios están sujetos a cambios. Esto será si el clima lo permite. Si hace mal tiempo, puede recoger los miércoles en la despensa de alimentos en Granby o los jueves en la despensa de alimentos en Kremmling.

Para más información llame **Aspen al 970-557-3186**, email aspen@mountainfamilycenter.org o visite www.mountainfamilycenter.org